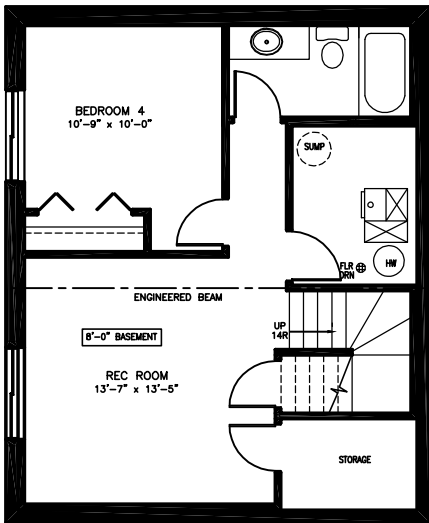


HAMPTON VILLAGE

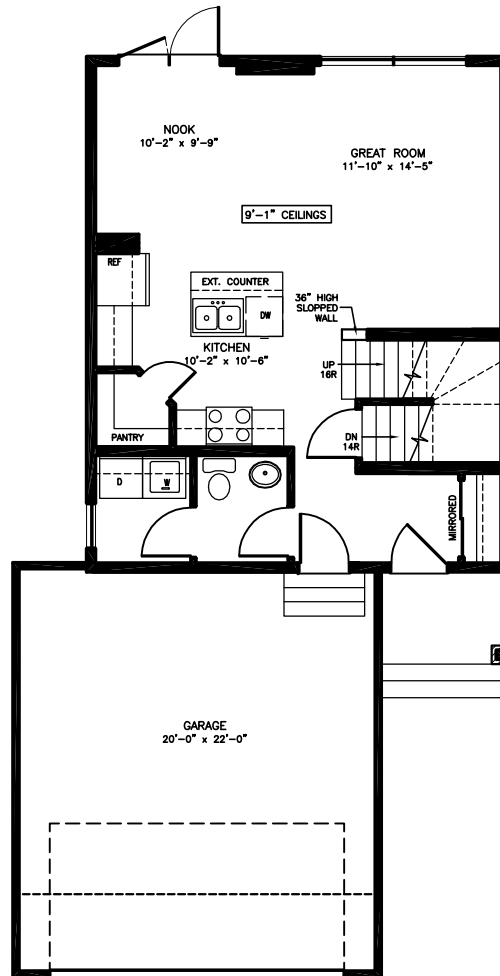
NORTH RIDGE'S NEWEST DEVELOPMENT

710 KOROL WAY
THE ECLIPSE ELEVATION C
1640 SQ FT

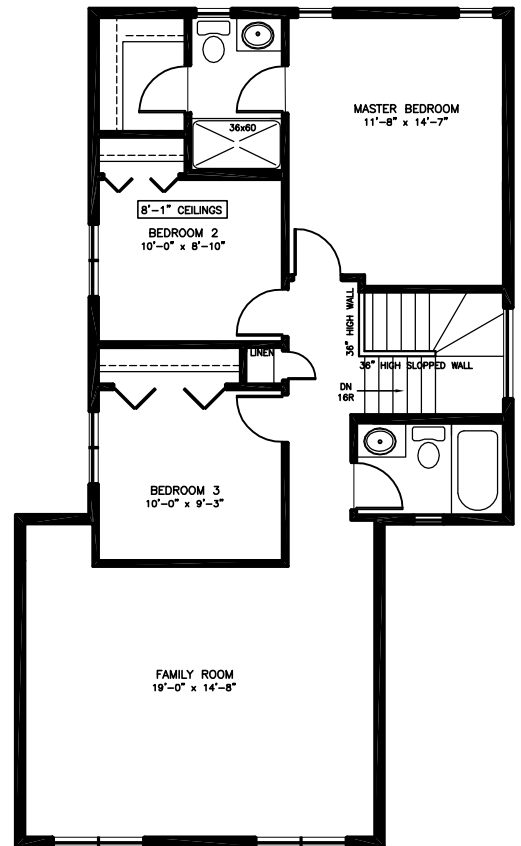
WIDTH- 27'-0"
DEPTH- 50'-0"



FUTURE BASEMENT PLAN
430 SQ. FT.
(NIC MECHANICAL
OR STAIRS)



MAIN FLOOR
644 SQ. FT.



SECOND FLOOR
996 SQ. FT.

NORTH RIDGE RESERVES THE RIGHT TO MAKE MODIFICATIONS AND CHANGES TO THE BUILDING DESIGN, SPECIFICATIONS AND FEATURES WITHOUT PRIOR NOTIFICATION. ERRORS AND OMISSIONS EXCEPTED.