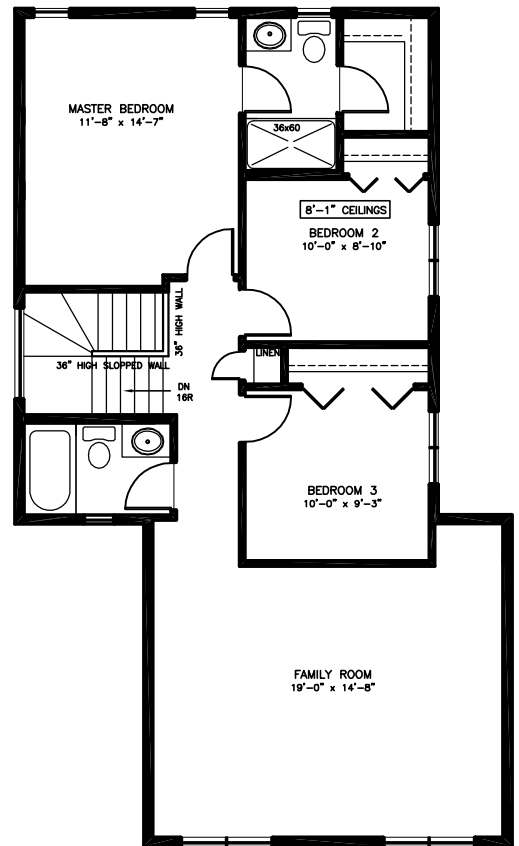
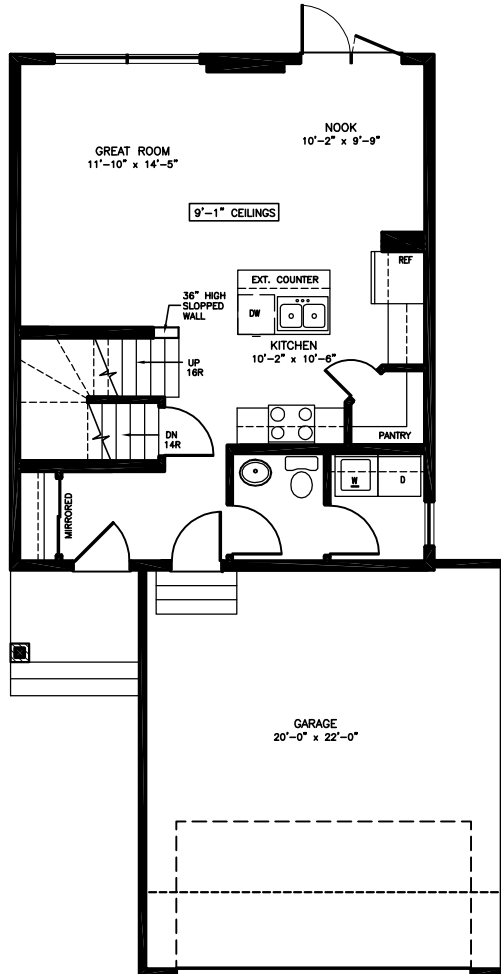
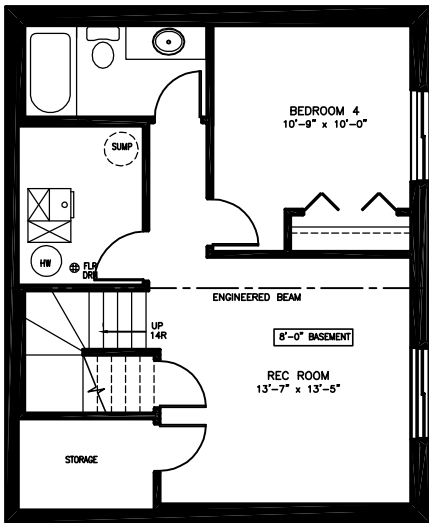


HAMPTON VILLAGE

NORTH RIDGE'S NEWEST DEVELOPMENT

706 KOROL WAY
 THE ECLIPSE ELEVATION A
 1640 SQ FT

WIDTH- 27'-0"
DEPTH- 50'-0"



NORTH RIDGE RESERVES THE RIGHT TO MAKE MODIFICATIONS AND CHANGES TO THE BUILDING DESIGN, SPECIFICATIONS AND FEATURES WITHOUT PRIOR NOTIFICATION. ERRORS AND OMISSIONS EXCEPTED.